

Redlands Coast IndigiScapes Centre

*Embracing new ways to protect the natural environment and
ecosystems*

September 2021



Redlands
c o a s t

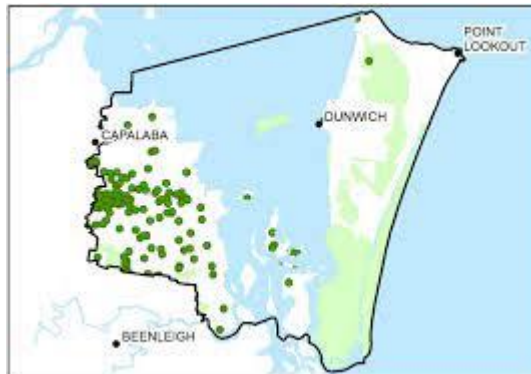


Redland
CITY COUNCIL

Redlands City (Quandamooka Country)

Where exactly are we? (It depends who you ask...)

South East Queensland



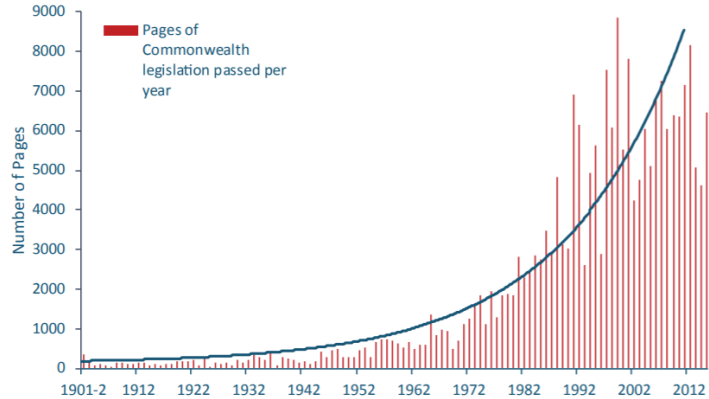
Since opening in 2000, the Redlands IndigiScapes Centre has provided the community with a space to connect and learn about the natural environment....



A lot has changed over the past 20 years...

Increasing complexity in regulation and legislation

Figure 2 Pages of Commonwealth Legislation Passed



Source: Institute of Public Affairs

Advancements in technology

The rise of smart phones, social media or streaming services



Increasing community expectations

Higher levels of service
Innovation – something new!
Diversity and inclusion

Redland City Council has moved to embrace a new approach to conservation, environmental education and sustainability

- ↑ Engaging with the community
- ↑ Providing new ways to connect with nature
- ↑ Developing partnerships



Increasing engagement with the community and finding new ways to stay in touch...

Continuing what's working well



Trialling new ways of engaging



Interpretive walking tracks



Hands on conservation –
Community Bushcare

Social Media

E-newsletters



Holiday Workshops and
nature play

Co-design of campaigns –
social research



Eco Markets

Redland's IndigiScapes Centre provides a place for the community and visitors a range of experiences...

From 'light touch' activities  to understanding ecology through Citizen Science



A dedicated space in Redlands Coast...

For families and the community to learn together



To showcase innovative ways for Council to helping community and visitors to learn more sustainability and green living.



To build **resilience** and potential for **regeneration** in the environment and communities in Redlands City.



Collecting seeds from native plants, building a seed library and propagation

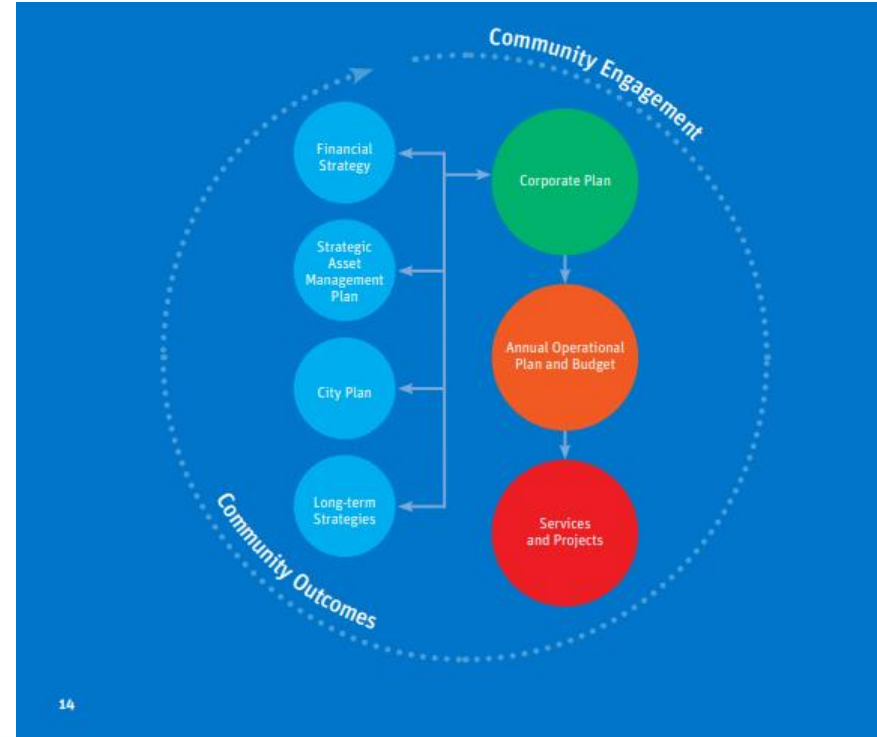
Bushfire consortium – balancing ecology, biodiversity, safety and emergency response



Supporting community learning

Underpinned by our Plans, Policies and Strategies

- Actively involving the community
- Building capacity and capability internally and within the community
- Based on science – robust baselines
- Seeking opportunities for innovation and leveraging investment



The activities and programmes offered via IndigiScapes enables Council, the community and the natural environment to **be prepared to respond to change.**

Understanding and learning how to respond to:

Changes in economic climate

Pests and diseases - biosecurity

Natural disasters

Climate Change and coastal hazards

Habitat change, decline or loss



The activities and programmes offered via IndigiScapes enables Council, the community and the natural environment to be prepared to respond to change.

Being better prepared by:

- ✓ Leveraging investment
- ✓ Analysing our effectiveness
- ✓ Trialing new ideas
- ✓ Embracing new technology



Building and fostering partnerships to get better outcomes and leverage investment

Interested organisations
STEAM Providers
Universities
Media
Volunteers

Research and Development Corporations
Local producers and businesses
Conservation groups
Educational providers

Vocational Training Providers



We are all in this together...

Redland's IndigiScapes Centre (IndigiScapes) and team aims to continue to deliver inspiring and engaging experiences to the community and visitors to connect with nature and enjoy all that the Redlands Coast's unique flora, fauna and natural environment has to offer.

We can only continue to do this by:

- Engaging with the community
- Providing new ways to connect with nature
- Developing and fostering partnerships

Plus always remembering - our people are an important part of our story and our success.





Thank you!

Case Study: Council's approach to koala conservation

GOALS

- Decisions based on science
- Protect and Improve habitat
- Reduce koala deaths
- Community making a difference



Embracing partnerships and major collaborations to deliver outcomes for the Koala Conservation Program

Internal

- ✓ Parks & Conservation
- ✓ Environmental Partnership team
- ✓ Wildlife Officers
- ✓ Bush care
- ✓ Strategic Planning
- ✓ Roads & Drainage
- ✓ Media and Communications team
- ✓ Traffic & Transport
- ✓ Animal Management
- ✓ Infrastructure & Operations

External



Innovative koala research

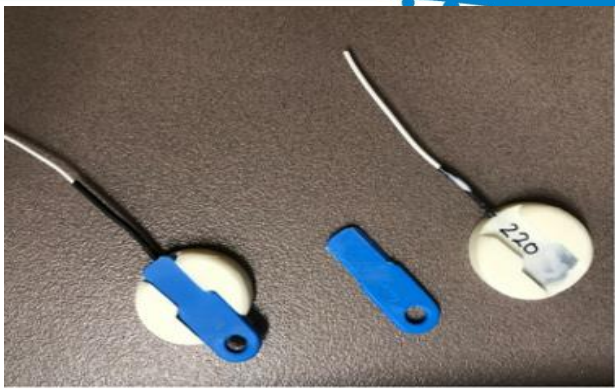
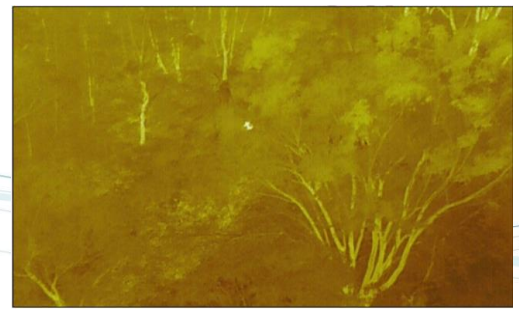
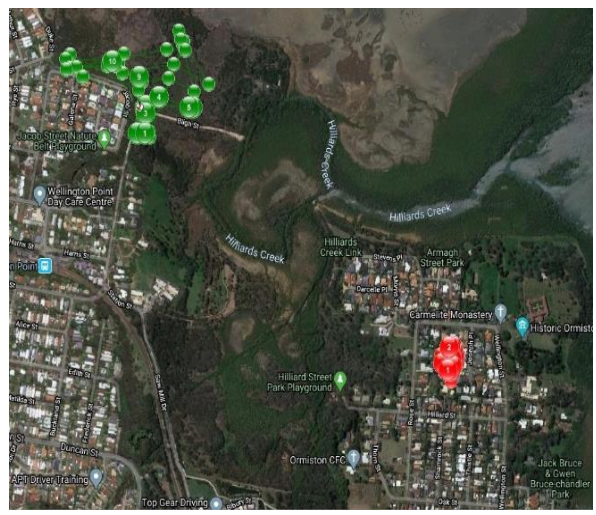
Bluetooth trial



Detection Drones & Dogs



Detection Dogs for Conservation



GPS Tracking



Genetic Mapping

Reducing koala deaths through health checks and monitoring

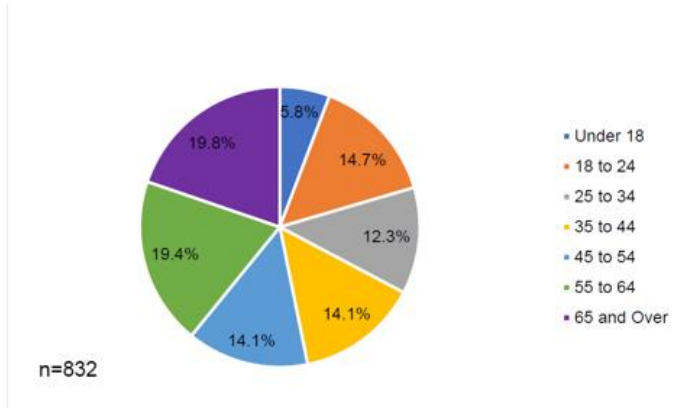
Progress since April 2019

- 40 captured in total across all KSNs
- 15 females with joeys
- 53 veterinary examinations
- 28% diagnosed as sick or injured
- 13 hospitalised (6 released)
- 7 died (disease/train)
- 2 joeys sent to carers
- 12 currently monitored (28 to date)
- 70% recorded in house yards and more than half crossed roads at least once,
- no recorded car strike on monitored roads in KSNs
- 550 koala sightings over 16 months
- 116 additional scat samples (2018)
- 50 plus individuals identified within KSNs via genetic sampling



How are we guiding the Community

90% of respondents believe koala conservation is shared responsibility between the council and community



Gender distribution 57.2% female 42.4% male

- ✓ 35% admitted the campaign message prompted them to behave differently
- ✓ 55 yrs and over significantly more likely to recall campaign
- ✓ Significant increase from baseline - people strongly agree that koala conservation is important, worthwhile, meaningful and enjoyable
- x More work to do with younger generation – target 2020/21
- x More education on what causes koala mortalities

Koala Awareness Campaign

Consistent key themes

- Dispersal
- Driver awareness
- Breeding season
- Secured pets
- Safe backyards

Increased recall
from 30% in 2018 to **68%**
in **2019**

↑ 38%

Men were the target for 2019
Increased men's recall to 73.5%

2018



Thanks to your
safe driving

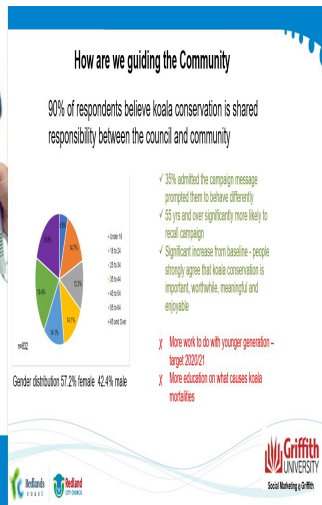


redland.qld.gov.au/koala

2019



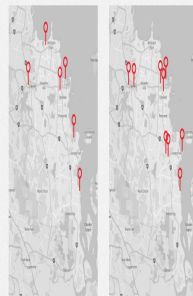
Let's care for koalas
It's breeding time.



2020

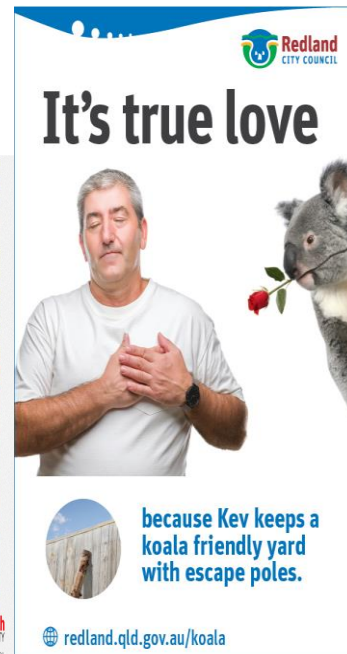
How we are listening to the community

More than 500 face-to-face surveys per effort pre and post campaigns 2018/2019/2020



because Kev keeps a
koala friendly yard
with escape poles.

redland.qld.gov.au/koala



Citywide community partnership

Redlands Coast Koala Watch

- Community project to collect locational data and manage the incidence of disease more effectively through early intervention

Vigilant and caring communities = healthier koala populations



Enhancing habitat & securing safe movement

✓ Priority considerations

- Wellington Street upgrade
- Kinross Underpass
- TMR/DES - genetic barrier roads
- QR - Cleveland Station; Birkdale fencing upgrade



Look out for koalas on the road.

