



Practising Inclusion

1

Proposed Douglas Shire Planning Scheme

13/09/2017

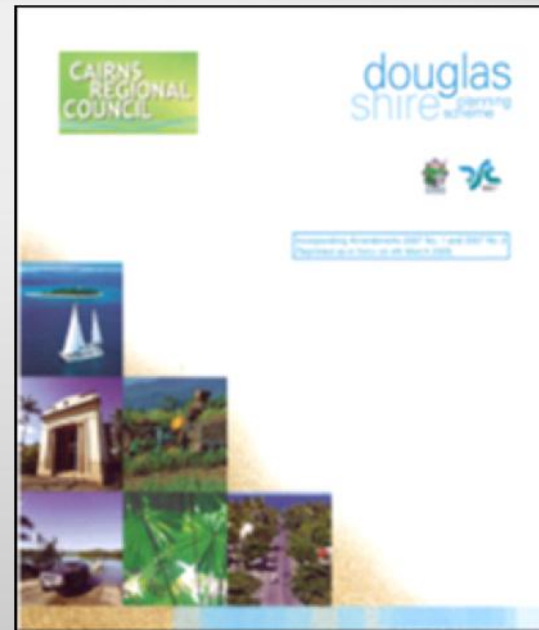
Douglas Shire Council

DOUGLAS SHIRE
COUNCIL

Current situation – 2006 Planning Scheme

2

99% silent
on Indigenous
Interests



What has changed since 2006 ?

3

- 2007 Native Title Determination to return significant areas of Aboriginal freehold land to Traditional Owners (TOs).
- Indigenous Land Use Agreements (ILUAs) identify these areas for housing and economic opportunity.

Where ?



4

What has not changed since 2006 ?

5

- o Planning regimes prevent 'Return to Country' from happening.

Conservation
Zone

Land use
definitions

Building
codes

State
Overlays

Impact
Assessments

- o Approval process too complex and expensive for Traditional Owner Groups to achieve.

Developing a brand new planning scheme for Douglas Shire

6

- Following de-amalgamation from Cairns, the new Douglas Shire Council resolved to prepare a new planning scheme.



Practising inclusion - What did we learn?

7

- Frustration amongst TO groups that their aspirations for sustainable development were being prevented by legislation.
- Planning schemes are too complex for TOs to work through.
- Too many barriers at all levels.
- 'Off-the-shelf' planning codes simply don't work on Country.

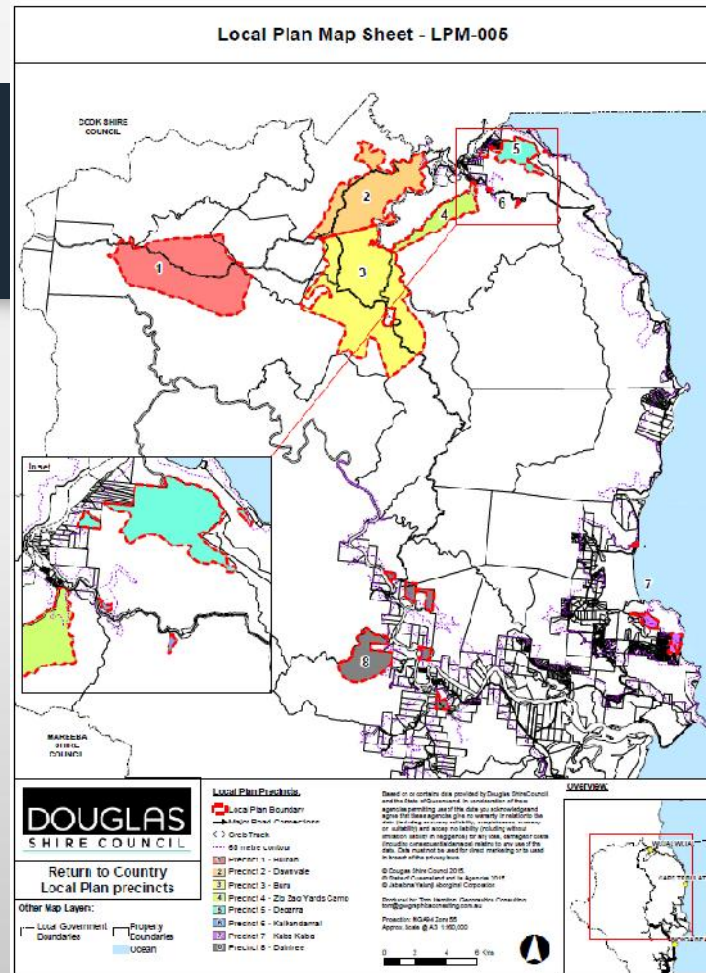
Practising inclusion - What the TOs asked us to do?

8

- Recognise TOs long standing connection to Country in the Shire Profile attached to the proposed planning scheme.
- Embed Return to Country aspirations in the Strategic Framework.
- Develop a stand-alone chapter in the planning scheme for land use codes to support Return to Country aspirations.

What we did?

- o Developed a stand alone 'Return to Country' Local Plan.
- o Recognises for the first time the original TO's understanding and intention of the ILUAs.



Practising Inclusion

10

- Return to Country Local Plan is only a planning framework at this stage.
- We are committed to working with TO's on developing their own precinct plans and development codes that genuinely support returning to live and work on Country.
- We will provide the tools needed to reflect the real challenges faced by a community returning to Country.

Why practise inclusion ?

11

- Renewed sense of excitement in a genuine, on-going TO community engagement process.
- The feeling of being listened to.



Practising inclusion:

12

Not just a town
planning issue!

It's a human rights
issue.

